

Assembling FSB ASL® for lock "Boda"



Image 1
Tools required when
assembling FSB ASL®.



Image 2
Inserting the drilling template
for lock "Boda".



Image 3
Lining the drilling template
up: parallel with the edge of
the door.



Image 4
Drilling from the righthand side
of the door. Drill through the
bottom righthand bushing on
the drilling template. Important:
do not drill into the lock case.

Assembling FSB ASL[®] for lock "Boda"



Image 5
Drilling from the righthand side of the door. Drill through the top lefthand bushing on the drilling template. Important: do not drill into the lock case.



Image 6
Drilling from the lefthand side of the door. Drill through the top righthand bushing on the drilling template. Important: do not drill into the lock case.



Image 7
Drilling from the lefthand side of the door. Drill through the bottom lefthand bushing on the drilling template. Important: do not drill into the lock case.

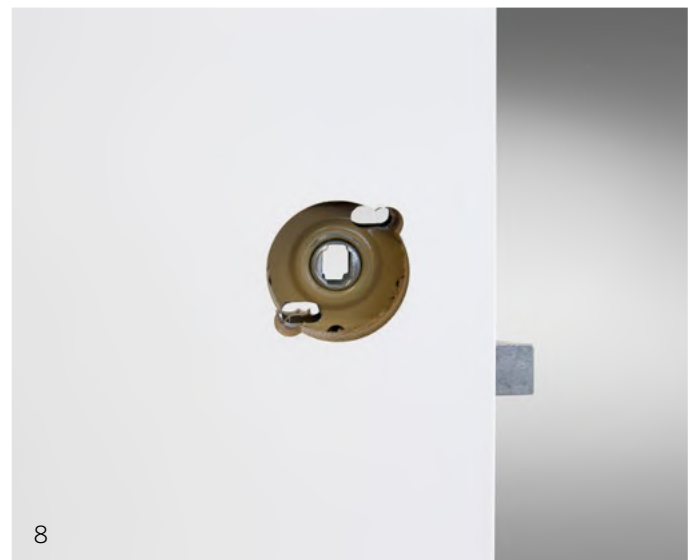


Image 8
Completed boreholes on the lefthand side of the door.

Assembling FSB ASL® for lock "Boda"



Image 9
Fitting the spindle from the lefthand side of the door. Slot on the FSB ASL® baserose, pointing it in the direction of the forend as shown.



Image 10
Slot on the FSB ASL® base-rose on the righthand side of the door, pointing it in the direction of the forend as shown.

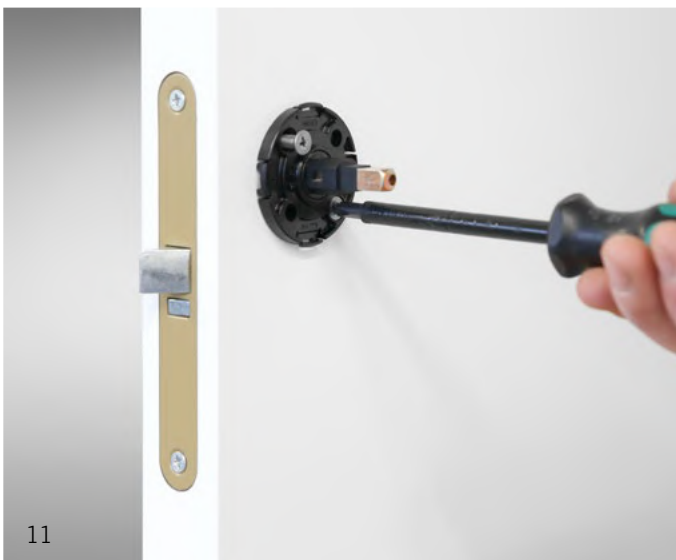


Image 11
Insert and tighten the screws supplied from the righthand side of the door. On the lefthand side, use the other hand as a means of holding the bearing in position. The sleeves are fitted from the lefthand side.

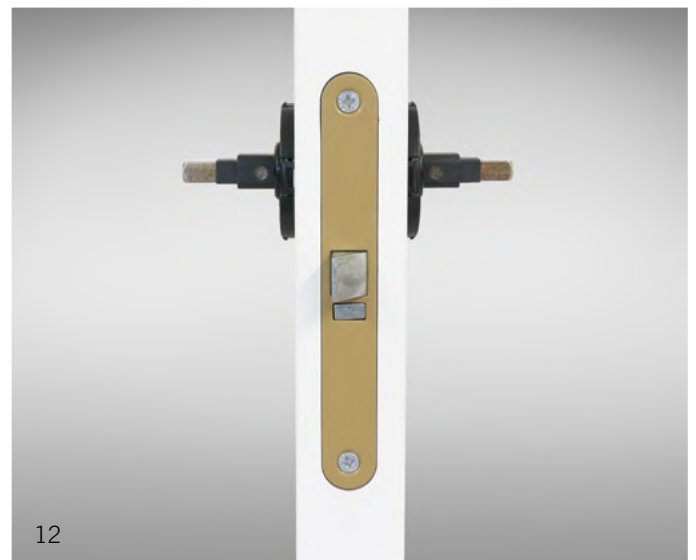


Image 12
Ensure the spindle is positioned centrally.

Assembling FSB ASL® for lock "Boda"



Image 13
Clip on the lefthand cover rose.



Image 14
Clip on the righthand cover rose.



Image 15
Slip on the FSB ASL® female handle sections. Insert grub screws on either side.



Image 16
Use an Allen key to tighten the righthand grub screw.

Assembling FSB ASL[®] for lock "Boda"



Image 17
Use an Allen key to tighten the
lefthand grub screw.



Image 18
Final horizontal position of
the handle.